

Setting the chosen Hadlock equations in Voluson E8

Dear Members of the Working Group:

It was brought to our attention that there may be some technical difficulties in choosing the appropriate Hadlock equations for the individual biometric indices on the Voluson E8 Machine.

Vasi has been working with the GE team to clarify the process. Detailed instructions on how to complete the setup are included below.

If you still have difficulties please contact us and we'll be happy to help as needed.

Best wishes for the holidays,

Vasi Stratulat: vasilica.stratulat@sunnybrook.ca

Nir Melamed: nir.melamed@sunnybrook.ca

STEP-BY-STEP INSTRUCTIONS

In order to set up the appropriate equations in the Voluson E8 Machine, we should first select "Hadlock 82" as default, and then manually set the "Hadlock 84" equations for HC and FL.

A. Setting Hadlock 82 as the default equation

- Press [Utility] button
- select [Measure Setup]
 - Select [Global parameters]
 - Select "Hadlock Table Type –Hadlock82" from the list
 - Select [Save]

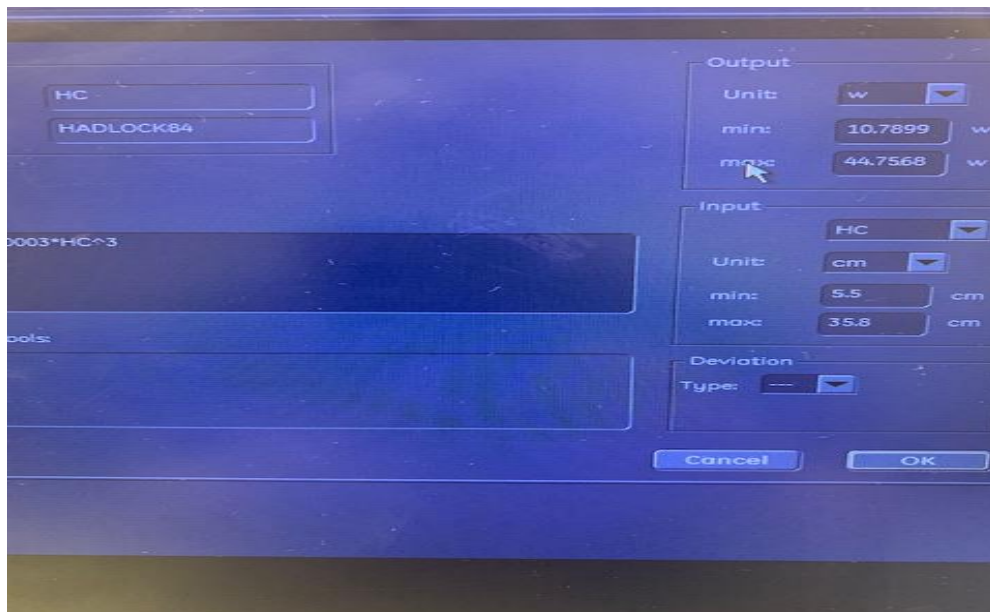
(At this point all the individual indices are expressed by Hadlock 82)

B. Setting Hadlock 84 equation for HC

- Select [Measure and Calc]
 - Select [Calc Under Measure Mode]
 - Select "HC" from the list
 - Click [Add]
 - Select the [HC] tab
 - Click [New]
 - You will get the message "replace the existing item?" - select [Yes]
 - Name the new parameter by typing "HC Hadlock 84" in the text box
 - Under "Fetal Age" select the [Equation] radio button, and click [Edit]

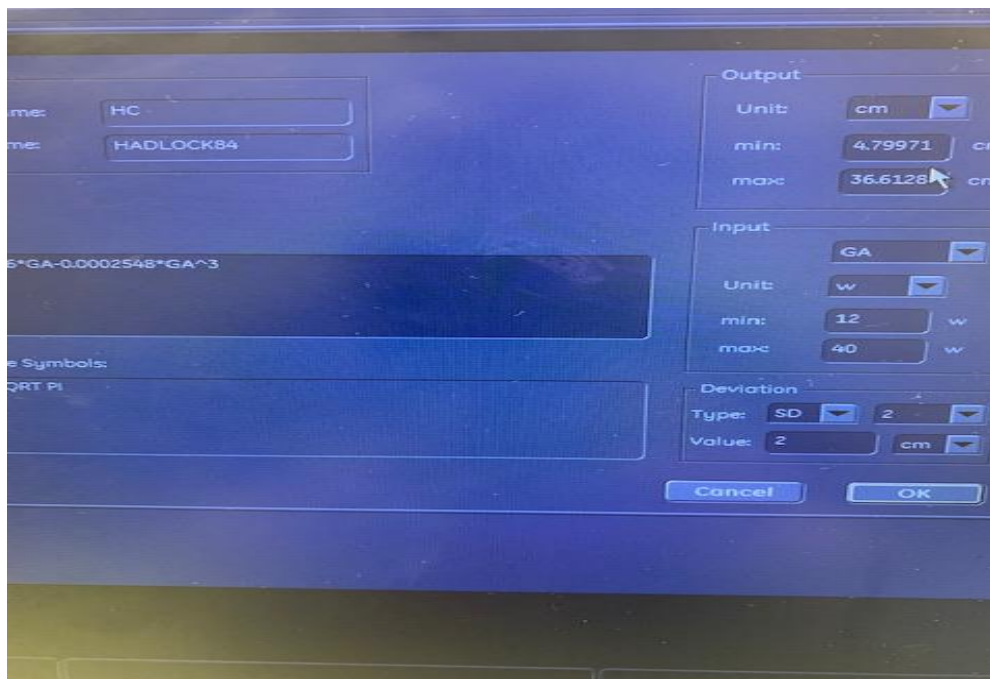
SOON Consensus Working Group on Fetal Growth
Meeting #2, Nov-12th, 2019 - Setting the Hadlock equations in Voluson E8

- Manually type the Hadlock 84 equation in the text box
- Fill up the text boxes on the right based on the information available in the image below, and then click [OK]



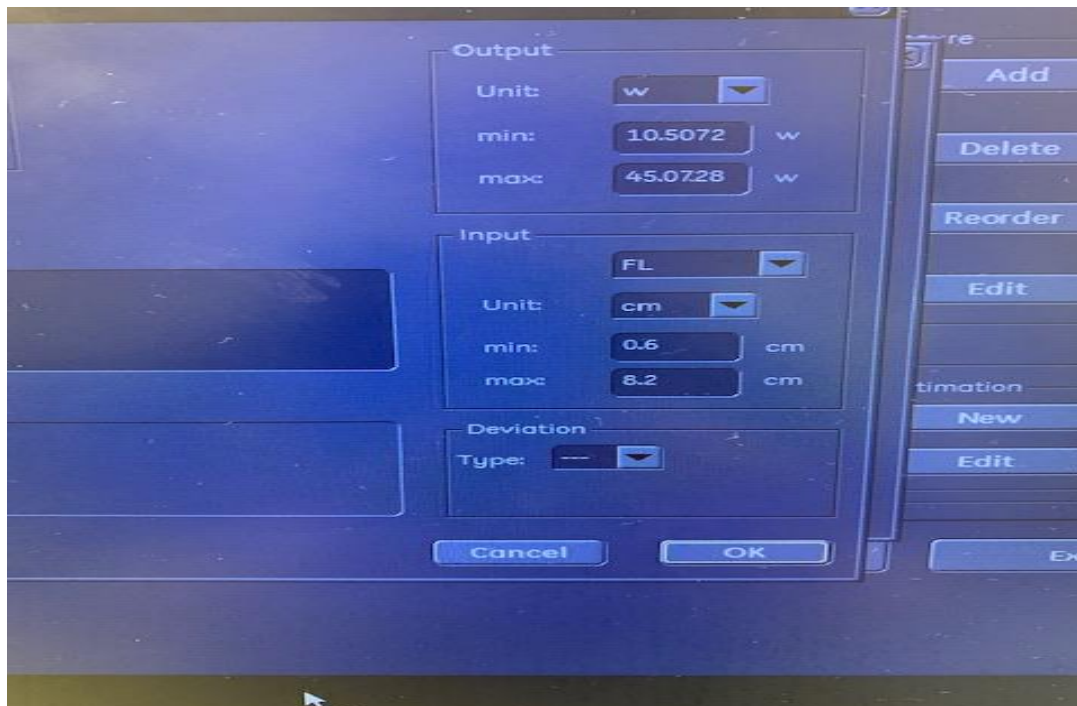
- Under “Fetal Growth” select the [Equation] radio button, and click [Edit]
 - Manually type the Hadlock 84 equation in the text box
 - Fill up the text boxes on the right based on the information available in the image below, and then click [OK]

○



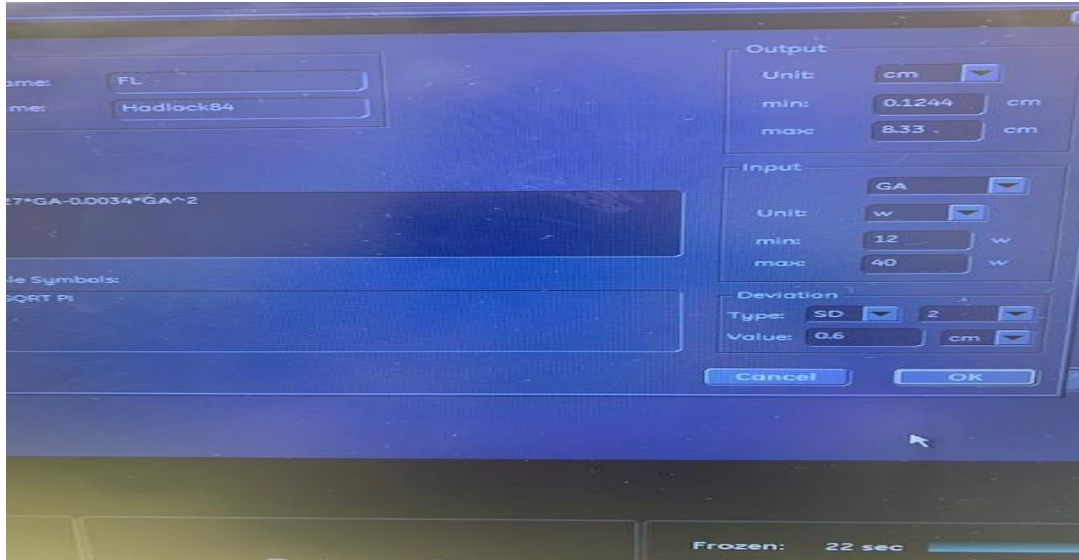
C. Setting Hadlock 84 equation for FL

- Select [Measure and Calc]
 - Select [Calc Under Measure Mode]
 - Select “FL” from the list
 - Click [Add]
 - Select the [FL] tab
 - Click [New]
 - You will get the message “replace the existing item?” - select [Yes]
 - Name the new parameter by typing “HC Hadlock 84” in the text box
 - Under “Fetal Age” select the [Equation] radio button, and click [Edit]
 - Manually type the Hadlock 84 equation in the text box
 - Fill up the text boxes on the right based on the information available in the image below, and then click [OK]



- Under “Fetal Growth” select the [Equation] radio button, and click [Edit]
 - Manually type the Hadlock 84 equation in the text box
 - Fill up the text boxes on the right based on the information available in the image below, and then click [OK]

SOON Consensus Working Group on Fetal Growth
Meeting #2, Nov-12th, 2019 - Setting the Hadlock equations in Voluson E8



Frozen: 22 sec